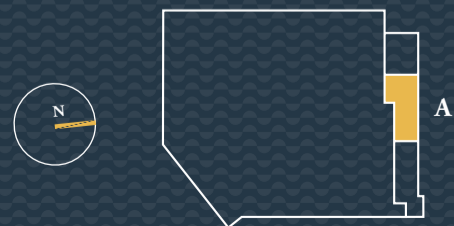
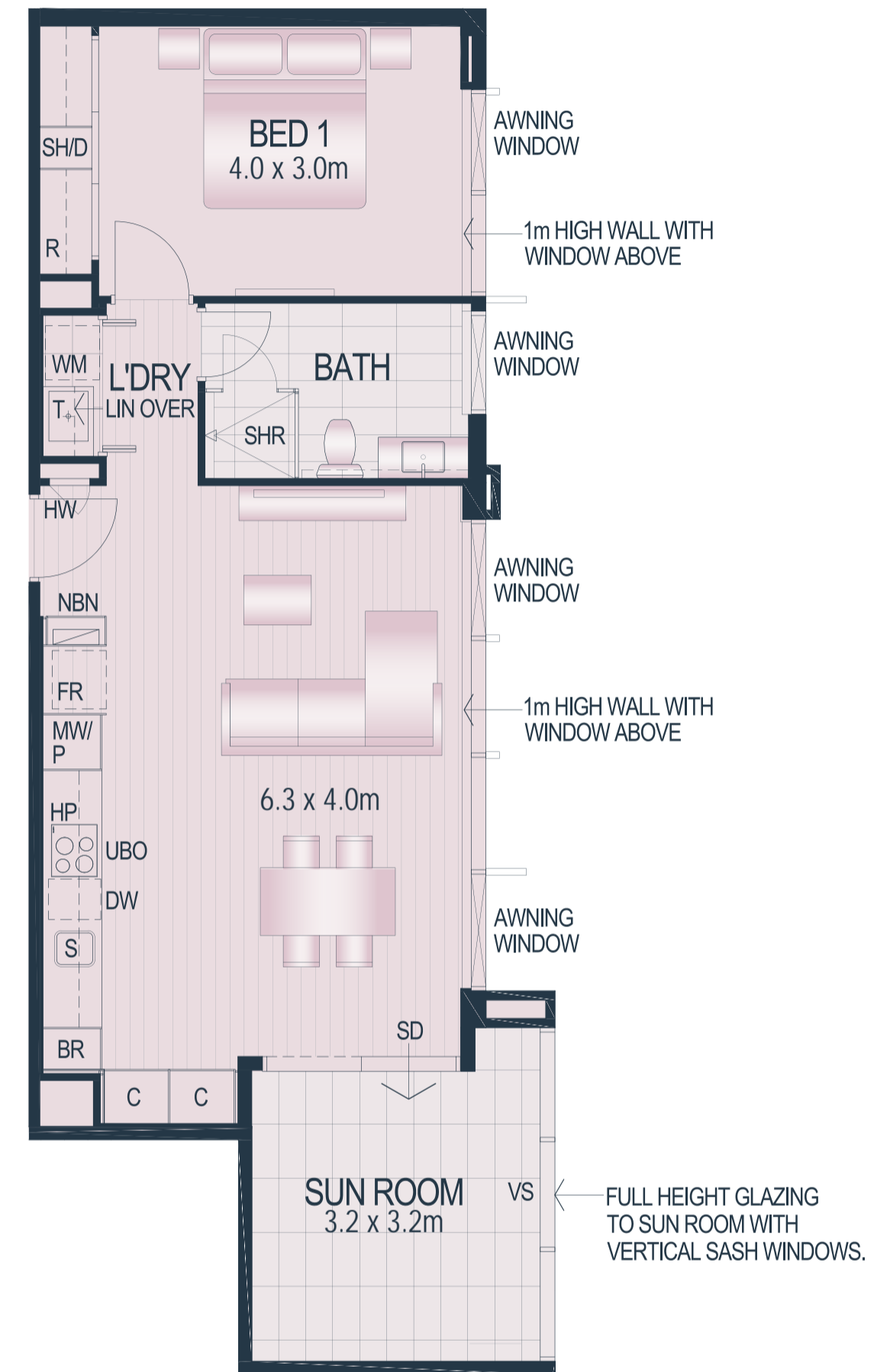


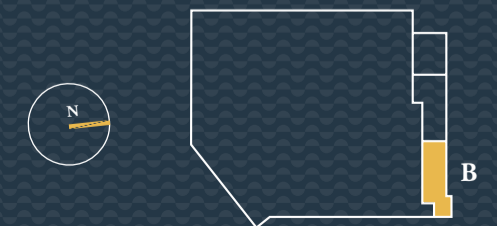
DETAILS	AREA	LOCATION
Bed 1	Apt. Area 64m ²	Residence 101 (PT. 1)
Bath 1	Sun Room 11m ²	Levels 1 st
Carbays 1	Carbays 13m ²	
Store 1	Store 4m ²	



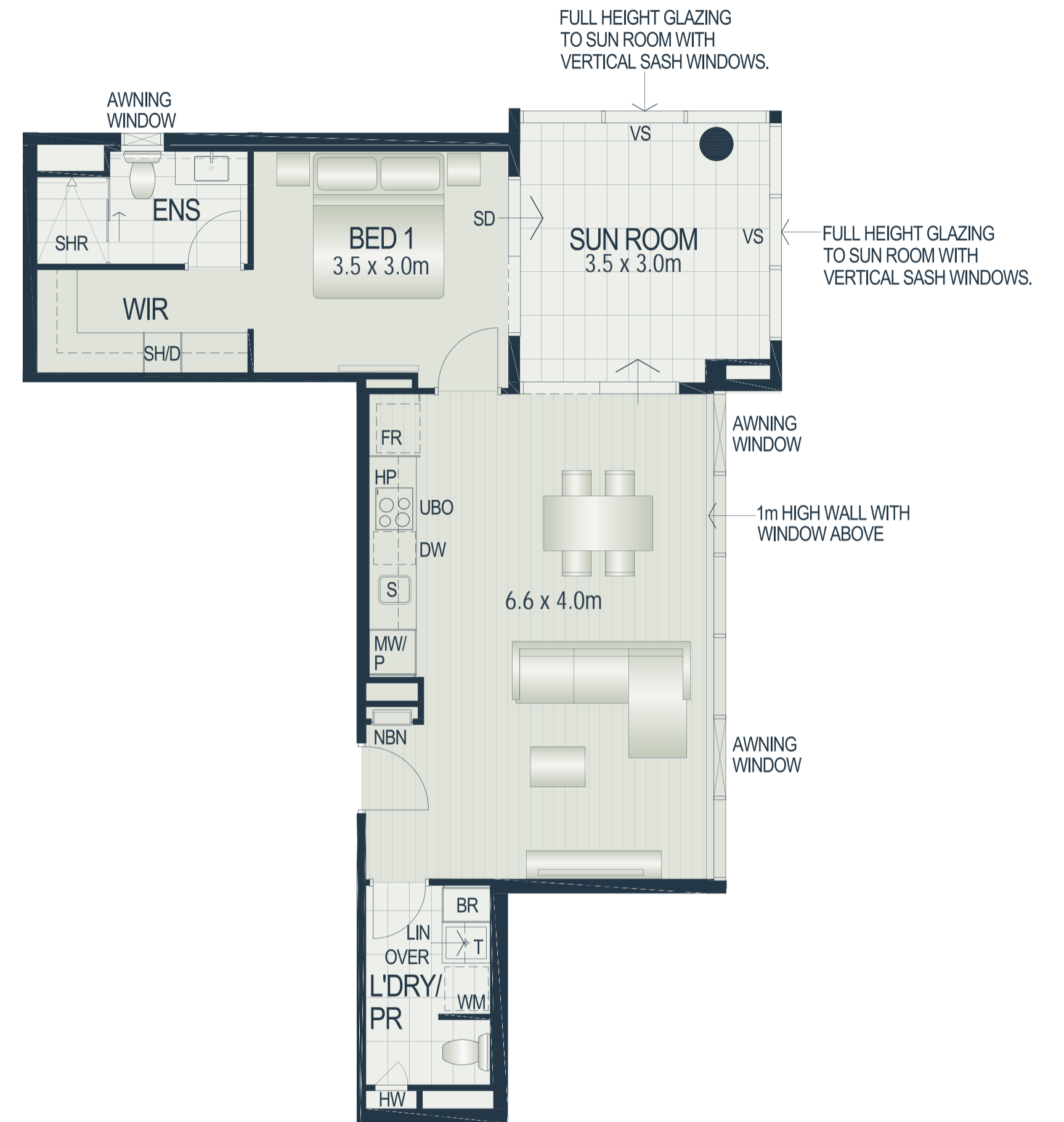
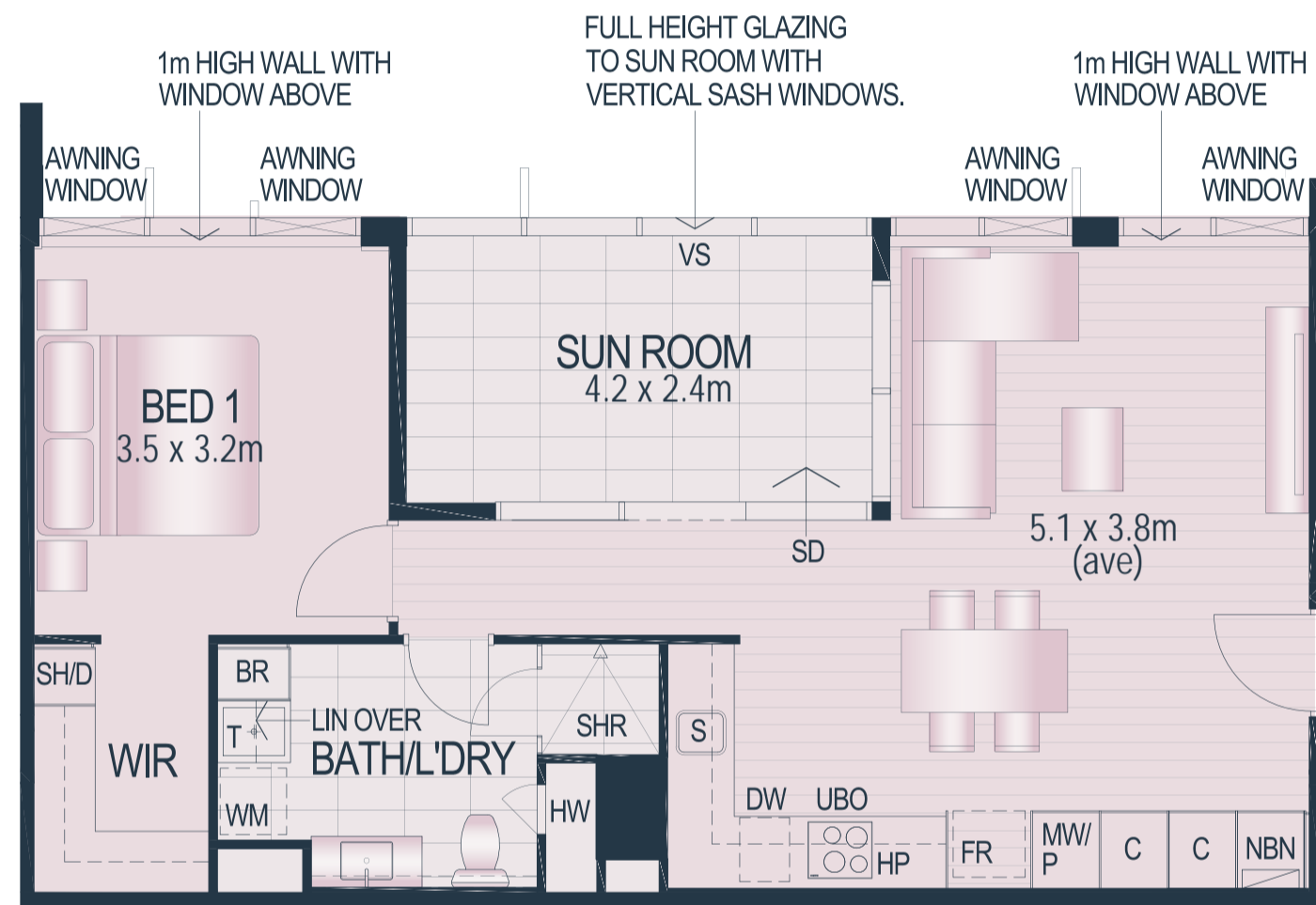
GENERAL NOTES: 1. The apartment areas shown here are approximate and are measured to: The outside face of external walls. The outside face of walls between apartment & lobby. The middle of party walls. 2. These area measurements are architectural measurements as defined in the contract conditions and are different from 'survey dimensions' also defined in the contract conditions. 3. Shape and configuration of balconies, doors, windows, ducts and columns may differ from those illustrated. 4. Refer to detailed apartment layouts included in the sales contract document for variations to layout & balconies. 5. The commercial tenancies areas shown here are approximate and are measured to the inside face of walls & inside face of glazing.



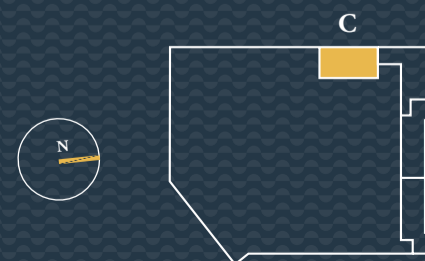
DETAILS	AREA	LOCATION
Bed 1	Apt. Area 60m ²	Residence 102 (PT. 2), 204 (PT. 6),
Bath 1	Sun Room 10m ²	304 (PT. 10)
Carbays 1	Carbays 13m ²	Levels 1 st - 3 rd
Store 1	Store 4m ²	



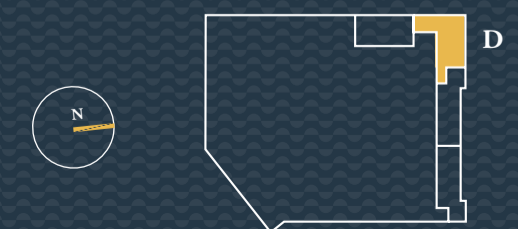
GENERAL NOTES: 1. The apartment areas shown here are approximate and are measured to: The outside face of external walls. The outside face of walls between apartment & lobby. The middle of party walls. 2. These area measurements are architectural measurements as defined in the contract conditions and are different from 'survey dimensions' also defined in the contract conditions. 3. Shape and configuration of balconies, doors, windows, ducts and columns may differ from those illustrated. 4. Refer to detailed apartment layouts included in the sales contract document for variations to layout & balconies. 5. The commercial tenancies areas shown here are approximate and are measured to the inside face of walls & inside face of glazing.



DETAILS	AREA	LOCATION
Bed 1	Apt. Area 61m ²	Residence 201 (PT. 3), 301 (PT. 7)
Bath 1	Sun Room 10m ²	Levels 2 nd - 3 rd
Carbays 1	Carbays 13m ²	
Store 1	Store 4m ²	

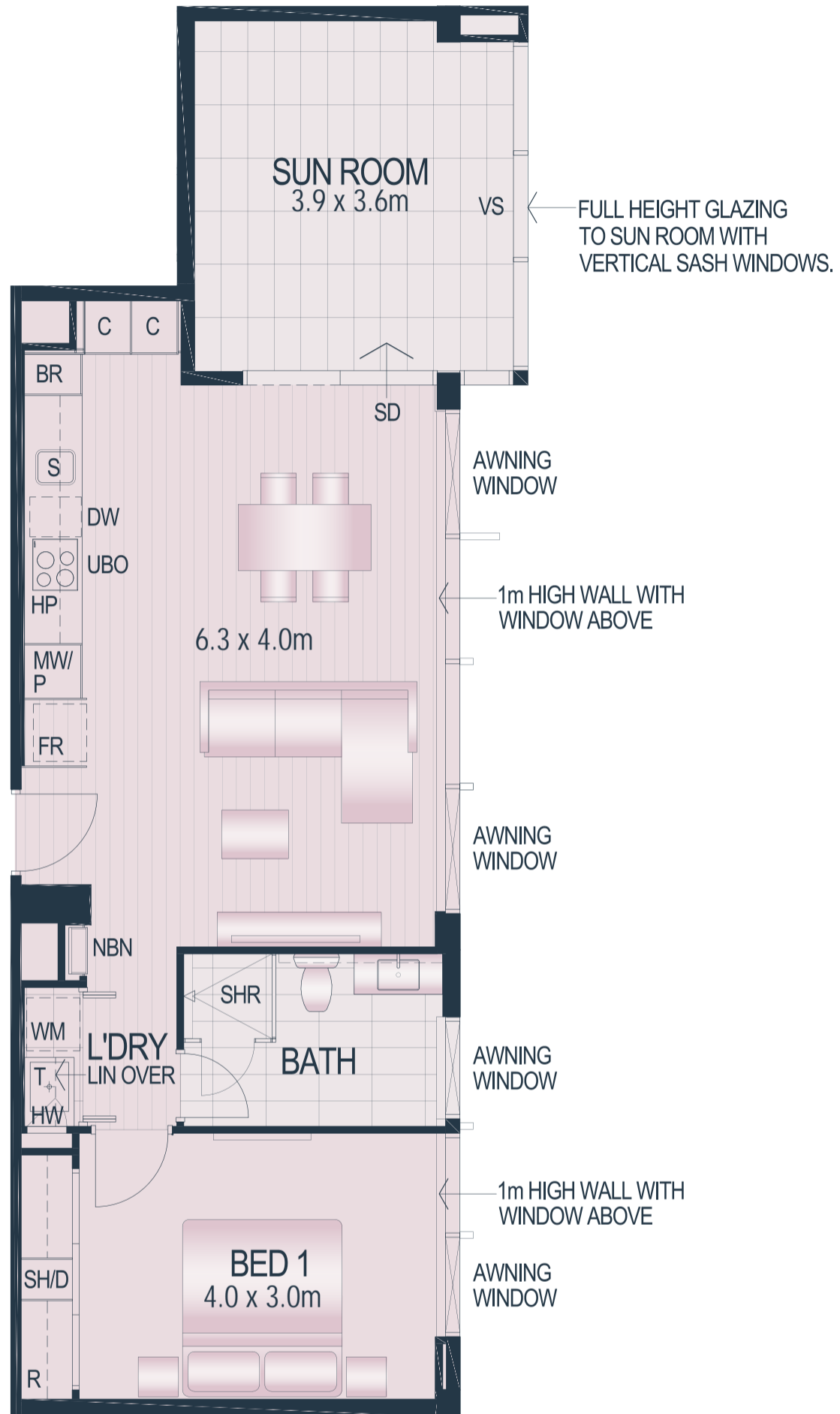


DETAILS	AREA	LOCATION
Bed 1	Apt. Area 63m ²	Residence 202 (PT. 4), 302 (PT. 8)
Bath 1.5	Sun Room 12m ²	Levels 2 nd - 3 rd
Carbays 1	Carbays 13m ²	
Store 1	Store 4m ²	



GENERAL NOTES: 1. The apartment areas shown here are approximate and are measured to: The outside face of external walls. The outside face of walls between apartment & lobby. The middle of party walls. 2. These area measurements are architectural measurements as defined in the contract conditions and are different from 'survey dimensions' also defined in the contract conditions. 3. Shape and configuration of balconies, doors, windows, ducts and columns may differ from those illustrated. 4. Refer to detailed apartment layouts included in the sales contract document for variations to layout & balconies. 5. The commercial tenancies areas shown here are approximate and are measured to the inside face of walls & inside face of glazing.

GENERAL NOTES: 1. The apartment areas shown here are approximate and are measured to: The outside face of external walls. The outside face of walls between apartment & lobby. The middle of party walls. 2. These area measurements are architectural measurements as defined in the contract conditions and are different from 'survey dimensions' also defined in the contract conditions. 3. Shape and configuration of balconies, doors, windows, ducts and columns may differ from those illustrated. 4. Refer to detailed apartment layouts included in the sales contract document for variations to layout & balconies. 5. The commercial tenancies areas shown here are approximate and are measured to the inside face of walls & inside face of glazing.

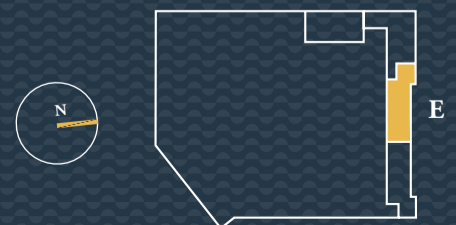


DETAILS

AREA

LOCATION

Bed	1	Apt. Area	60m ²	Residence	203 (PT. 5), 303 (PT. 9)
Bath	1	Sun Room	14m ²	Levels	2 nd - 3 rd
Carbays	1	Carbays	13m ²		
Store	1	Store	4m ²		



GENERAL NOTES: 1. The apartment areas shown here are approximate and are measured to: The outside face of external walls. The outside face of walls between apartment & lobby. The middle of party walls. 2. These area measurements are architectural measurements as defined in the contract conditions and are different from 'survey dimensions' also defined in the contract conditions. 3. Shape and configuration of balconies, doors, windows, ducts and columns may differ from those illustrated. 4. Refer to detailed apartment layouts included in the sales contract document for variations to layout & balconies. 5. The commercial tenancies areas shown here are approximate and are measured to the inside face of walls & inside face of glazing.