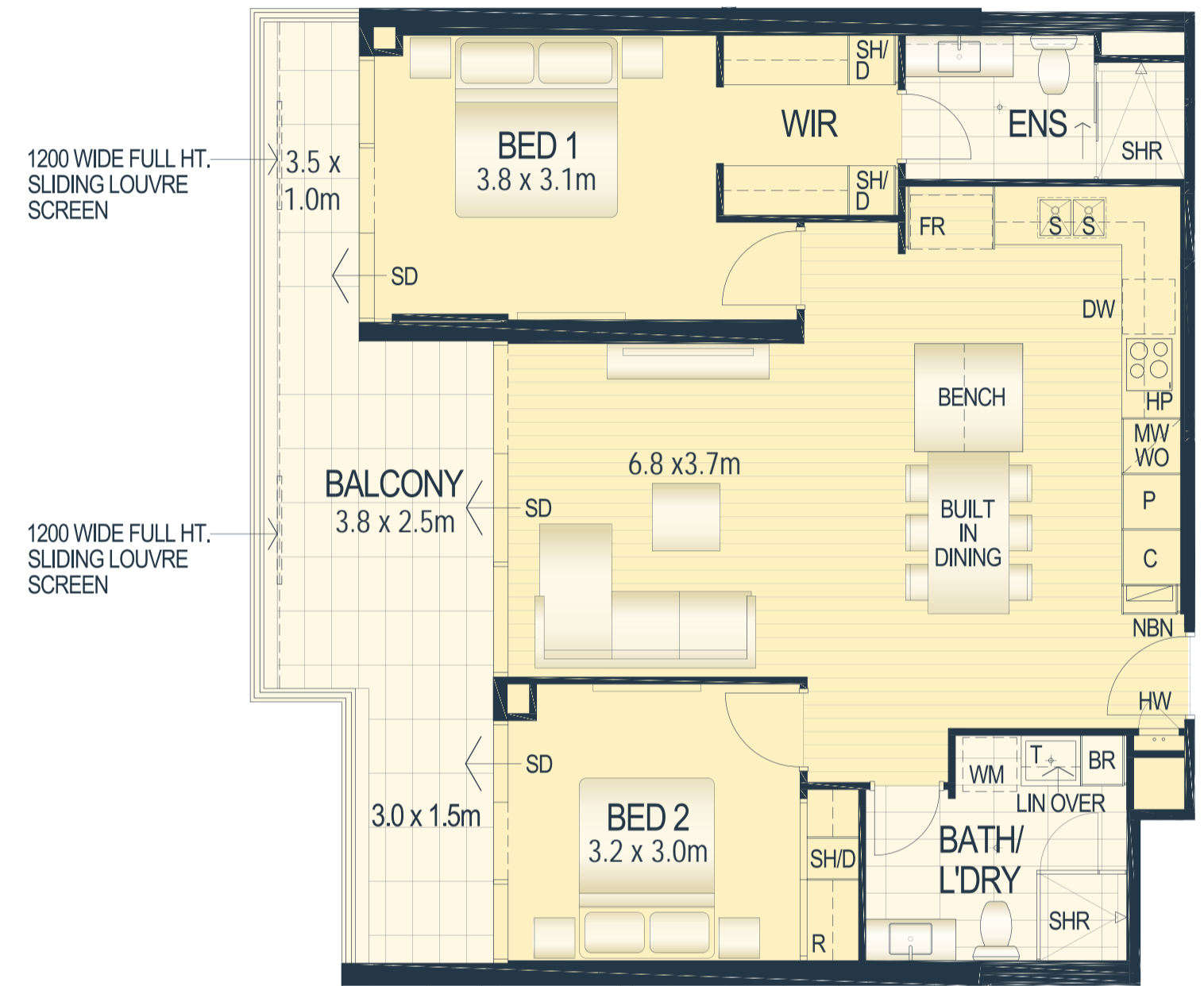


1200 WIDE FULL HT. SLIDING LOUVRE SCREEN

1200 WIDE FULL HT. SLIDING LOUVRE SCREEN

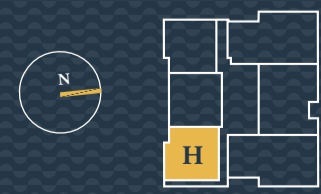


1200 WIDE FULL HT. SLIDING LOUVRE SCREEN

1200 WIDE FULL HT. SLIDING LOUVRE SCREEN



DETAILS	AREA	LOCATION
Bed 2	Apt. Area 86m ²	Residence 603 (PT. 13), 703 (PT. 19), 803 (PT. 25),
Bath 2	Balcony 18m ²	903 (PT. 31), 1003 (PT. 37), 1103 (PT. 43),
Carbays 1	Carbays 13 - 26m ²	1203 (PT. 49), 1303 (PT. 55), 1403 (PT. 61),
Store 1	Store 4 - 6m ²	1503 (PT. 67), 1603 (PT. 73), 1703 (PT. 79),
		1803 (PT. 85), 1903 (PT. 91), 2003 (PT. 97)
		Levels 6 th - 20 th

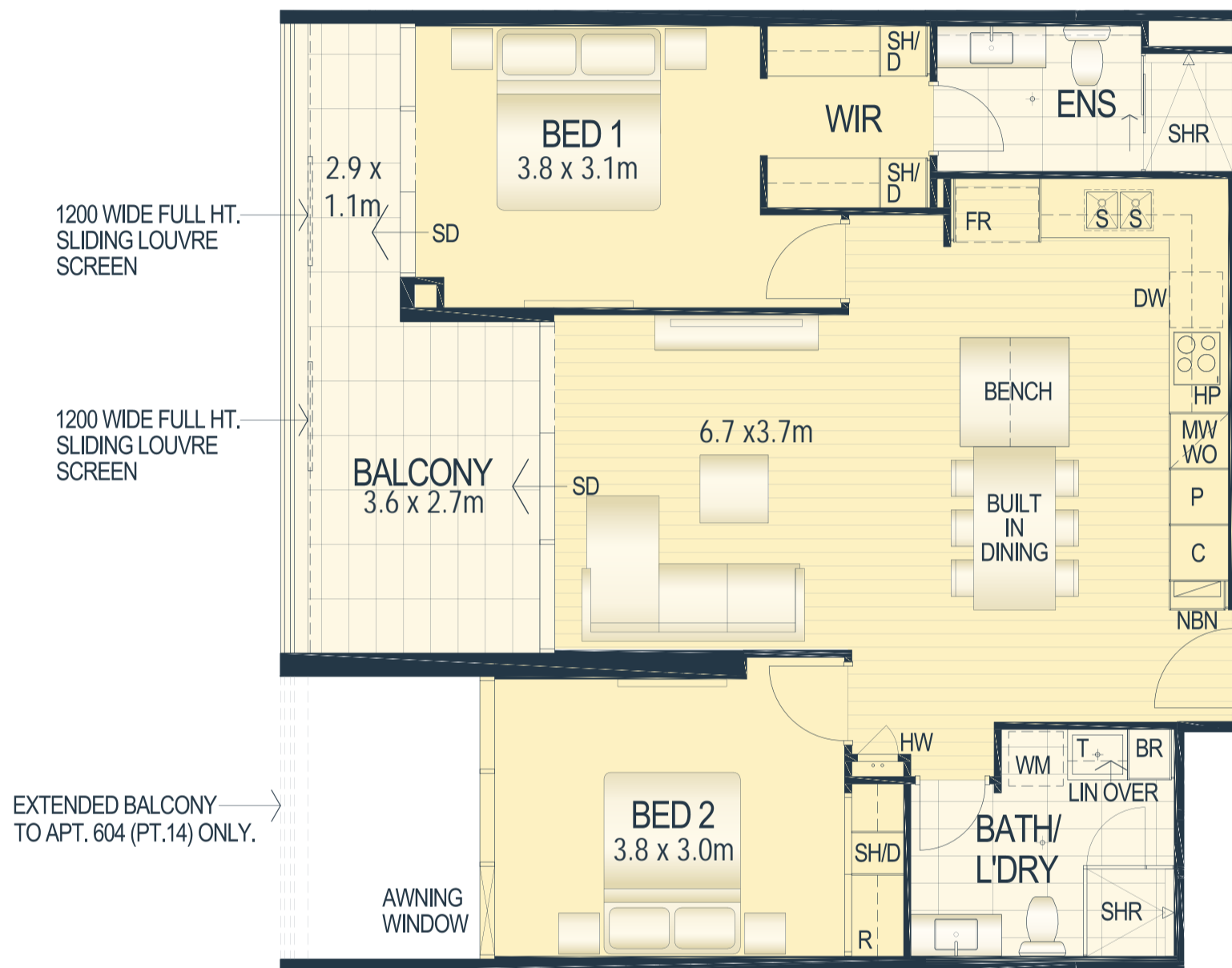


GENERAL NOTES: 1. The apartment areas shown here are approximate and are measured to: The outside face of external walls. The outside face of walls between apartment & lobby. The middle of party walls. 2. These area measurements are architectural measurements as defined in the contract conditions and are different from 'survey dimensions' also defined in the contract conditions. 3. Shape and configuration of balconies, doors, windows, ducts and columns may differ from those illustrated. 4. Refer to detailed apartment layouts included in the sales contract document for variations to layout & balconies. 5. The commercial tenancies areas shown here are approximate and are measured to the inside face of walls & inside face of glazing.

DETAILS	AREA	LOCATION
Bed 2	Apt. Area 86m ²	Residence 605 (PT. 15), 705 (PT. 21), 805 (PT. 27),
Bath 2	Balcony 18m ²	905 (PT. 33), 1005 (PT. 39), 1105 (PT. 45),
Carbays 1	Carbays 13 - 26m ²	1205 (PT. 51), 1305 (PT. 57), 1405 (PT. 63),
Store 1	Store 4 - 5m ²	1505 (PT. 69), 1605 (PT. 75), 1705 (PT. 81),
		1805 (PT. 87), 1905 (PT. 93), 2005 (PT. 99)
		Levels 6 th - 20 th



GENERAL NOTES: 1. The apartment areas shown here are approximate and are measured to: The outside face of external walls. The outside face of walls between apartment & lobby. The middle of party walls. 2. These area measurements are architectural measurements as defined in the contract conditions and are different from 'survey dimensions' also defined in the contract conditions. 3. Shape and configuration of balconies, doors, windows, ducts and columns may differ from those illustrated. 4. Refer to detailed apartment layouts included in the sales contract document for variations to layout & balconies. 5. The commercial tenancies areas shown here are approximate and are measured to the inside face of walls & inside face of glazing.



DETAILS

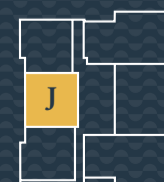
AREA

LOCATION

Bed	2
Bath	2
Carbays	1
Store	1

Apt. Area	87m ²
Balcony	13 - 20m ²
Carbays	13 - 26m ²
Store	4 - 6m ²

Residence	604 (PT. 14), 704 (PT. 20), 804 (PT. 26), 904 (PT. 32), 1004 (PT. 38), 1104 (PT. 44), 1204 (PT. 50), 1304 (PT. 56), 1404 (PT. 62), 1504 (PT. 68), 1604 (PT. 74), 1704 (PT. 80), 1804 (PT. 86), 1904 (PT. 92), 2004 (PT. 98)
Levels	6 th - 20 th



GENERAL NOTES: 1. The apartment areas shown here are approximate and are measured to: The outside face of external walls. The outside face of walls between apartment & lobby. The middle of party walls. 2. These area measurements are architectural measurements as defined in the contract conditions and are different from 'survey dimensions' also defined in the contract conditions. 3. Shape and configuration of balconies, doors, windows, ducts and columns may differ from those illustrated. 4. Refer to detailed apartment layouts included in the sales contract document for variations to layout & balconies. 5. The commercial tenancies areas shown here are approximate and are measured to the inside face of walls & inside face of glazing.