



DETAILS	AREA	LOCATION
Bed 3	Apt. Area 141m ²	Residence 602 (PT. 12), 702 (PT. 18), 802 (PT. 24),
Bath 2	Balcony 27m ²	902 (PT. 30), 1002 (PT. 36), 1102 (PT. 42),
Carbays 2	Carbays 26 - 45m ²	1202 (PT. 48), 1302 (PT. 54), 1402 (PT. 60),
Store 1	Store 4 - 8m ²	1502* (PT. 66), 1602* (PT. 72), 1702* (PT. 78),
		1802* (PT. 84), 1902* (PT. 90), 2002* (PT. 96)
		Levels 6 th - 20 th

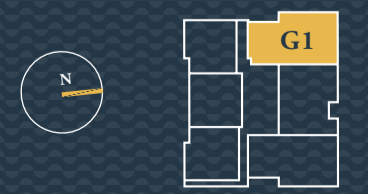


*Car bays within garage

GENERAL NOTES: 1. The apartment areas shown here are approximate and are measured to: The outside face of external walls. The outside face of walls between apartment & lobby. The middle of party walls. 2. These area measurements are architectural measurements as defined in the contract conditions and are different from 'survey dimensions' also defined in the contract conditions. 3. Shape and configuration of balconies, doors, windows, ducts and columns may differ from those illustrated. 4. Refer to detailed apartment layouts included in the sales contract document for variations to layout & balconies. 5. The commercial tenancies areas shown here are approximate and are measured to the inside face of walls & inside face of glazing.

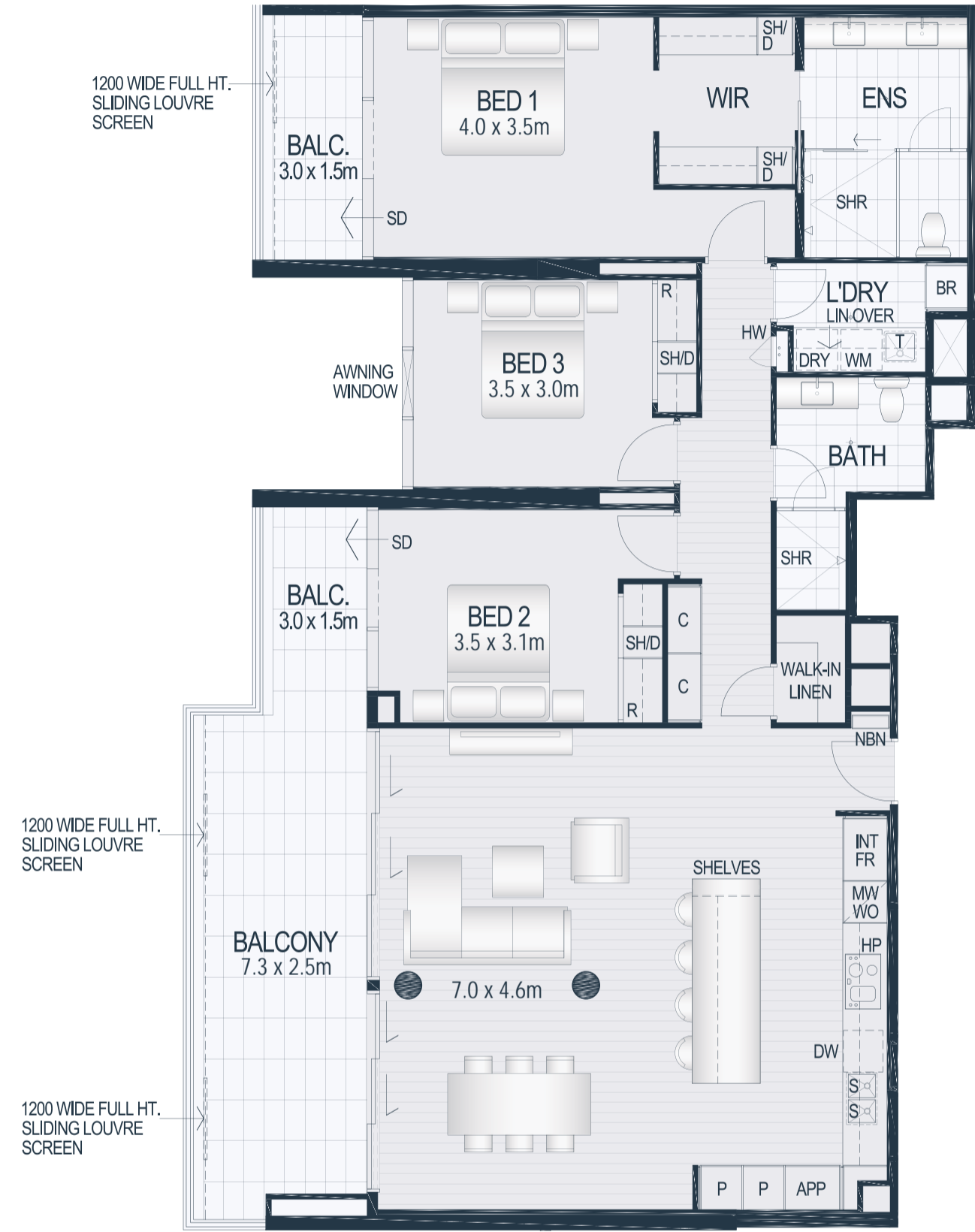


DETAILS	AREA	LOCATION
Bed 3	Apt. Area 141m ²	Residence 606 (PT. 16), 706 (PT. 22), 806 (PT. 28),
Bath 2	Balcony 27m ²	906 (PT. 34), 1006 (PT. 40), 1106 (PT. 46),
Carbays 2	Carbays 26 - 45m ²	1206 (PT. 52), 1306 (PT. 58), 1406* (PT. 64),
Store 1	Store 4 - 6m ²	1506* (PT. 70), 1606* (PT. 76), 1706* (PT. 82),
		1806* (PT. 88), 1906* (PT. 94), 2006* (PT. 100)
		Levels 6 th - 20 th

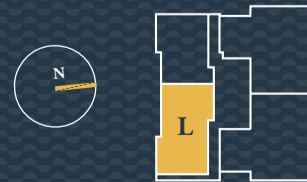


*Car bays within garage

GENERAL NOTES: 1. The apartment areas shown here are approximate and are measured to: The outside face of external walls. The outside face of walls between apartment & lobby. The middle of party walls. 2. These area measurements are architectural measurements as defined in the contract conditions and are different from 'survey dimensions' also defined in the contract conditions. 3. Shape and configuration of balconies, doors, windows, ducts and columns may differ from those illustrated. 4. Refer to detailed apartment layouts included in the sales contract document for variations to layout & balconies. 5. The commercial tenancies areas shown here are approximate and are measured to the inside face of walls & inside face of glazing.



DETAILS	AREA	LOCATION
Bed	3	Apt. Area 142m ²
Bath	2	Balcony 28m ²
Carbays	2	Garage 33 - 42m ²
Store	1	Store 4 - 9m ²
		Residence 2102 (PT. 102), 2202 (PT. 106), 2302 (PT. 110), 2402 (PT. 114)
		Levels 21 st - 24 th



GENERAL NOTES: 1. The apartment areas shown here are approximate and are measured to: The outside face of external walls. The outside face of walls between apartment & lobby. The middle of party walls. 2. These area measurements are architectural measurements as defined in the contract conditions and are different from 'survey dimensions' also defined in the contract conditions. 3. Shape and configuration of balconies, doors, windows, ducts and columns may differ from those illustrated. 4. Refer to detailed apartment layouts included in the sales contract document for variations to layout & balconies. 5. The commercial tenancies areas shown here are approximate and are measured to the inside face of walls & inside face of glazing.



DETAILS	AREA	LOCATION
Bed	3	Apt. Area 117m ²
Bath	2	Balcony 22m ²
Carbays	2	Garage 35 - 42m ²
Store	1	Store 4m ²
		Residence 2103 (PT. 103), 2203 (PT. 107), 2303 (PT. 111), 2403 (PT. 115)
		Levels 21 st - 24 th



GENERAL NOTES: 1. The apartment areas shown here are approximate and are measured to: The outside face of external walls. The outside face of walls between apartment & lobby. The middle of party walls. 2. These area measurements are architectural measurements as defined in the contract conditions and are different from 'survey dimensions' also defined in the contract conditions. 3. Shape and configuration of balconies, doors, windows, ducts and columns may differ from those illustrated. 4. Refer to detailed apartment layouts included in the sales contract document for variations to layout & balconies. 5. The commercial tenancies areas shown here are approximate and are measured to the inside face of walls & inside face of glazing.