

SUB-PENTHOUSE 3 BED / 3.5 BATH

TYPE **K**

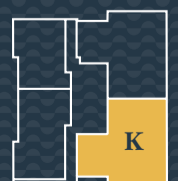


DETAILS

AREA

LOCATION

Bed	3	Apt. Area	204m ²	Residence	2101 (PT. 101), 2201 (PT. 105), 2301 (PT. 109), 2401 (PT. 113)
Bath	3.5	Balcony	43m ²	Levels	21 st - 24 th
Carbays	3	Garage	51 - 60m ²		
Store	1	Store	4 - 6m ²		



GENERAL NOTES: 1. The apartment areas shown here are approximate and are measured to: The outside face of external walls. The outside face of walls between apartment & lobby. The middle of party walls. 2. These area measurements are architectural measurements as defined in the contract conditions and are different from 'survey dimensions' also defined in the contract conditions. 3. Shape and configuration of balconies, doors, windows, ducts and columns may differ from those illustrated. 4. Refer to detailed apartment layouts included in the sales contract document for variations to layout & balconies. 5. The commercial tenancies areas shown here are approximate and are measured to the inside face of walls & inside face of glazing.

SUB-PENTHOUSE
3 BED / 3.5 BATH



DETAILS

AREA

LOCATION

Bed	3	Apt. Area	206m ²	Residence	2104 (PT. 104), 2204 (PT. 108), 2304 (PT. 112), 2404 (PT. 116)
Bath	3.5	Balcony	45m ²	Levels	21 st - 24 th
Carbays	3	Garage	49 - 65m ²		
Store	1	Store	6m ²		



PENTHOUSE

4 BED / 4.5 BATH



DETAILS

AREA

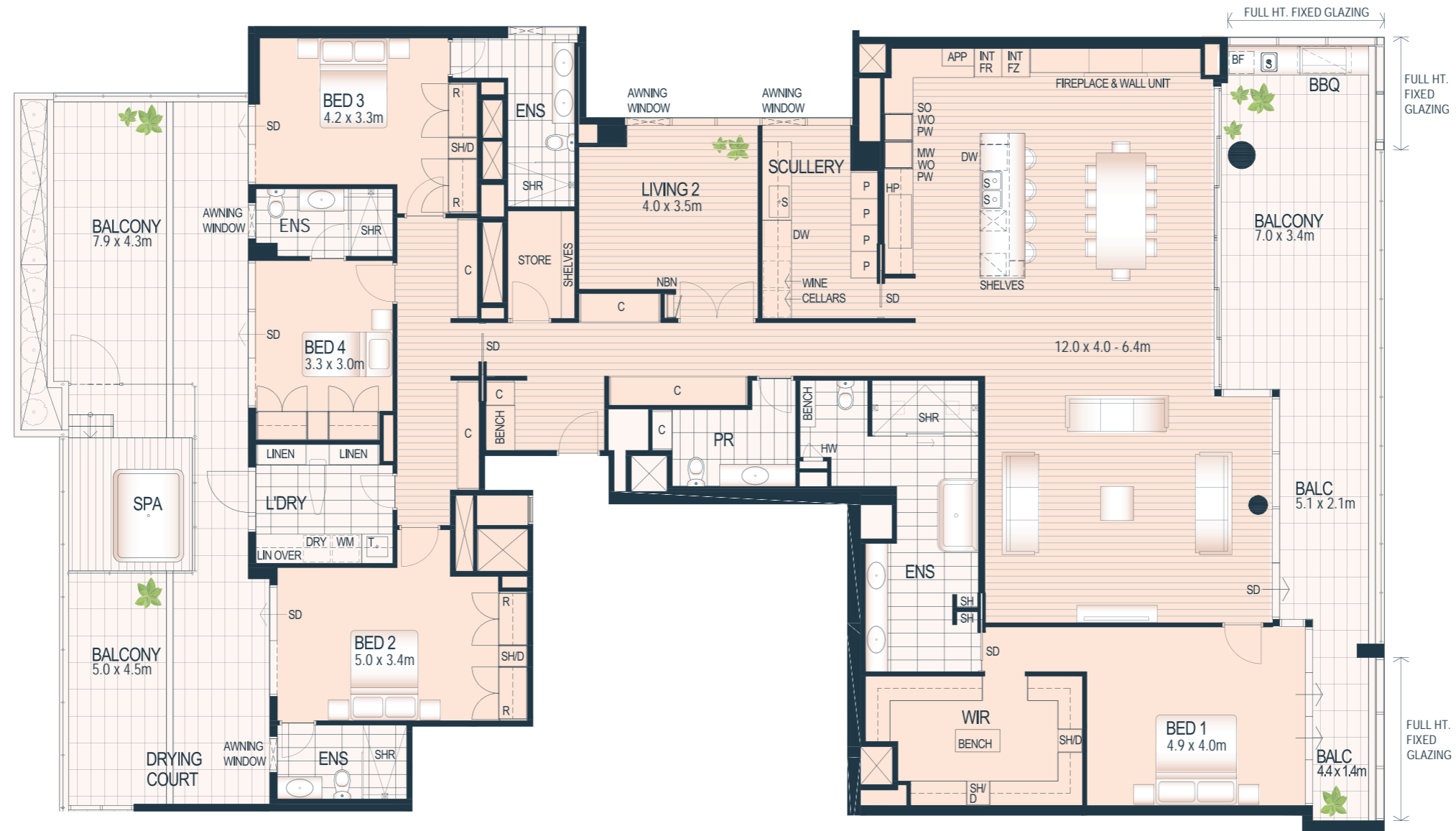
LOCATION

Bed	4	Apt. Area	310m ²	Residence	2501 (PT. 117)
Bath	4.5	Balcony	104m ²	Levels	25 th
Carbays	3	Garage	60m ²		
Store	1	Store	6m ²		



PENTHOUSE 4 BED / 4.5 BATH

TYPE **Q**



DETAILS

AREA

LOCATION

Bed	4	Apt. Area	314m ²	Residence	2502 (PT. 118)
Bath	4.5	Balcony	113m ²	Levels	25 th
Carbays	3	Garage	57m ²		
Store	1	Store	6m ²		



GENERAL NOTES: 1. The apartment areas shown here are approximate and are measured to: The outside face of external walls. The outside face of walls between apartment & lobby. The middle of party walls. 2. These area measurements are architectural measurements as defined in the contract conditions and are different from 'survey dimensions' also defined in the contract conditions. 3. Shape and configuration of balconies, doors, windows, ducts and columns may differ from those illustrated. 4. Refer to detailed apartment layouts included in the sales contract document for variations to layout & balconies. 5. The commercial tenancies areas shown here are approximate and are measured to the inside face of walls & inside face of glazing.