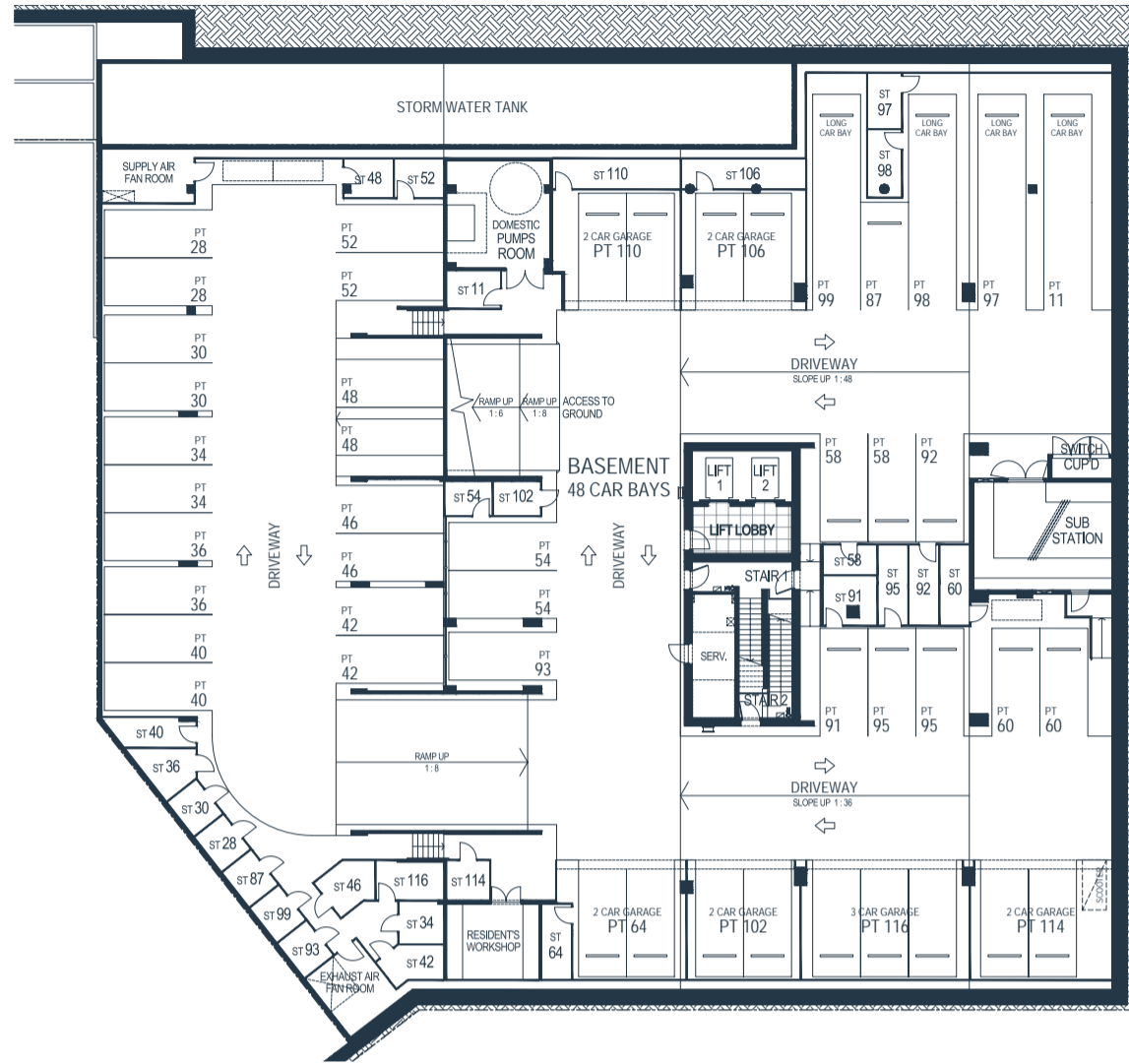
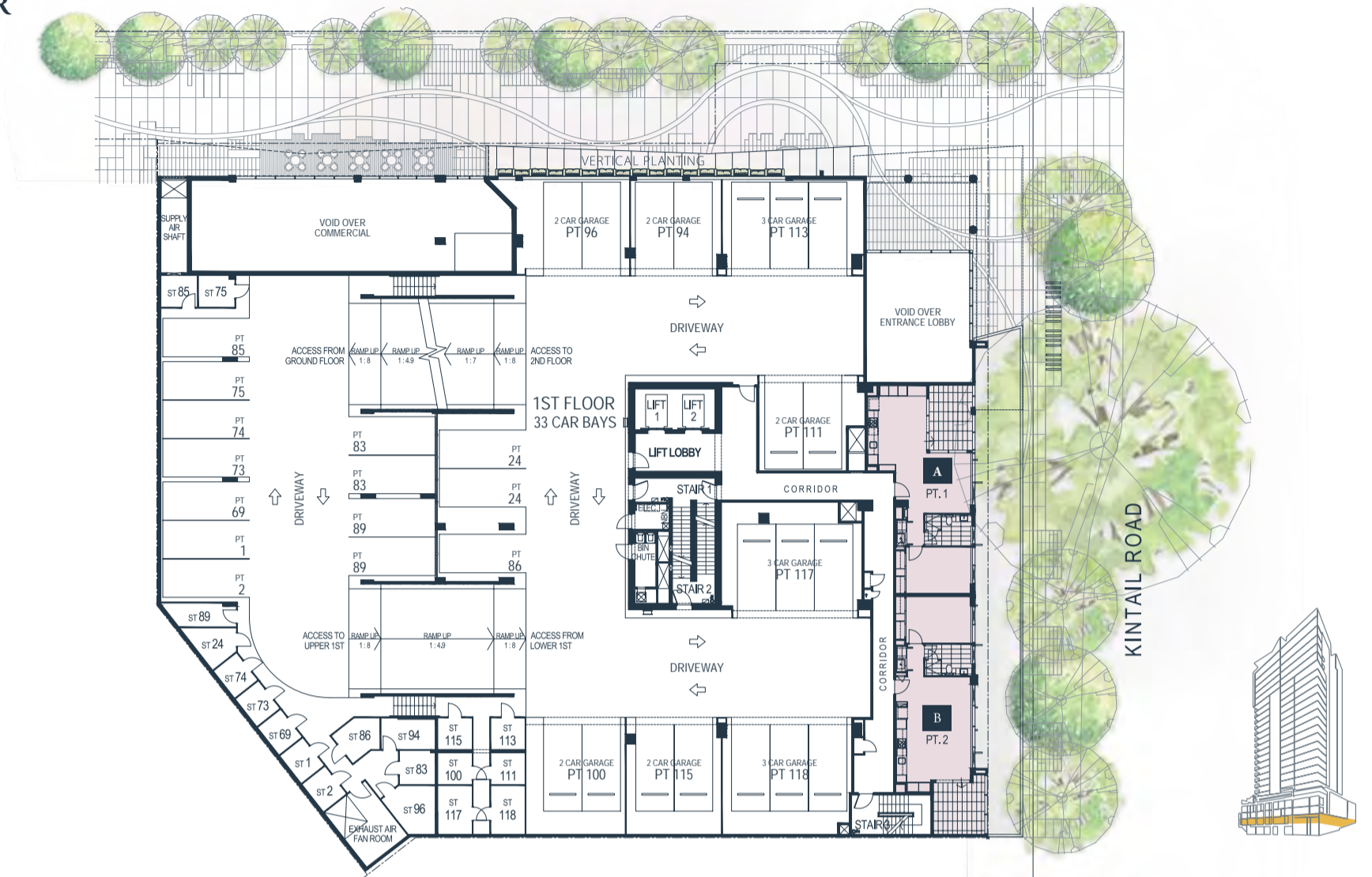


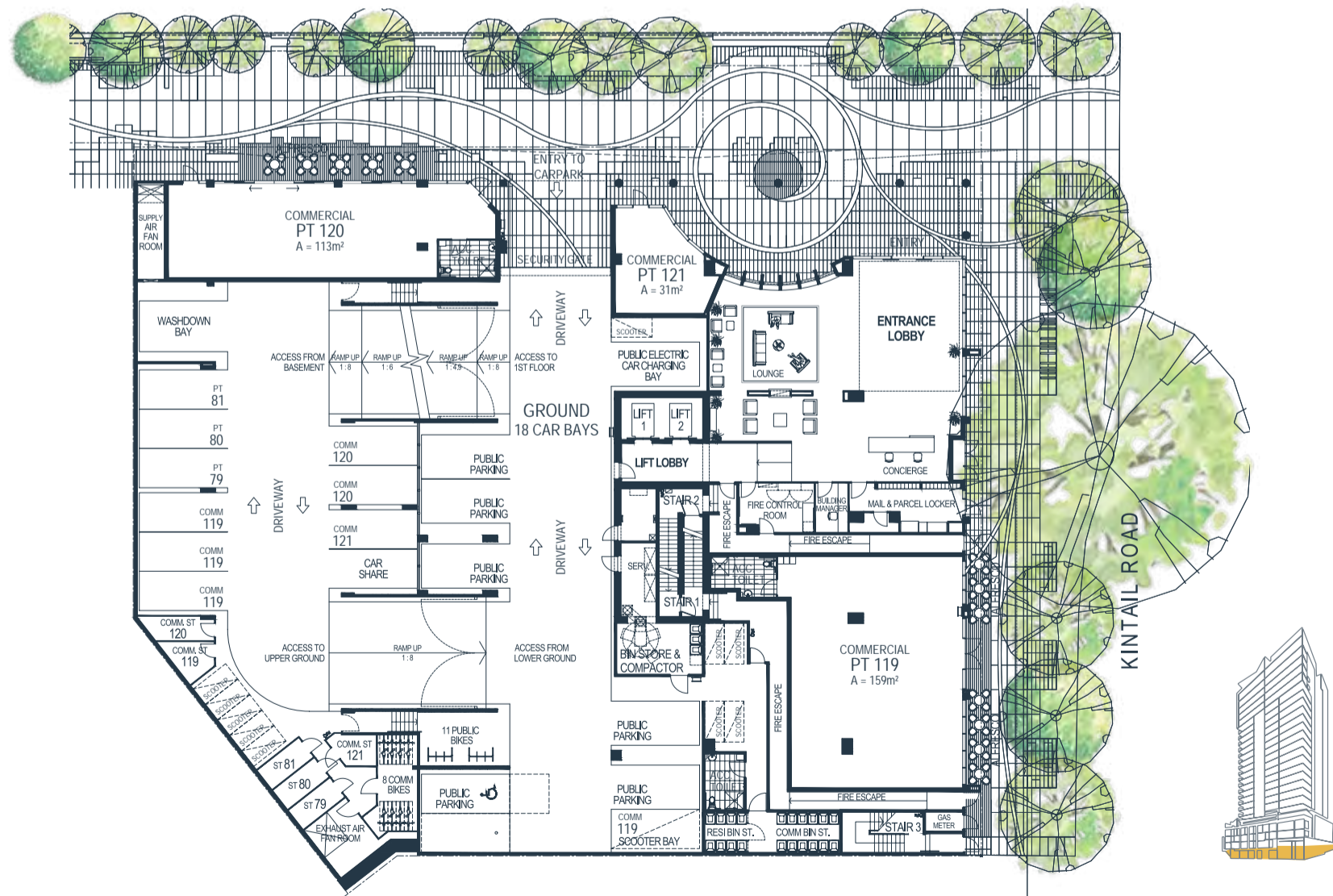
BASEMENT FLOOR



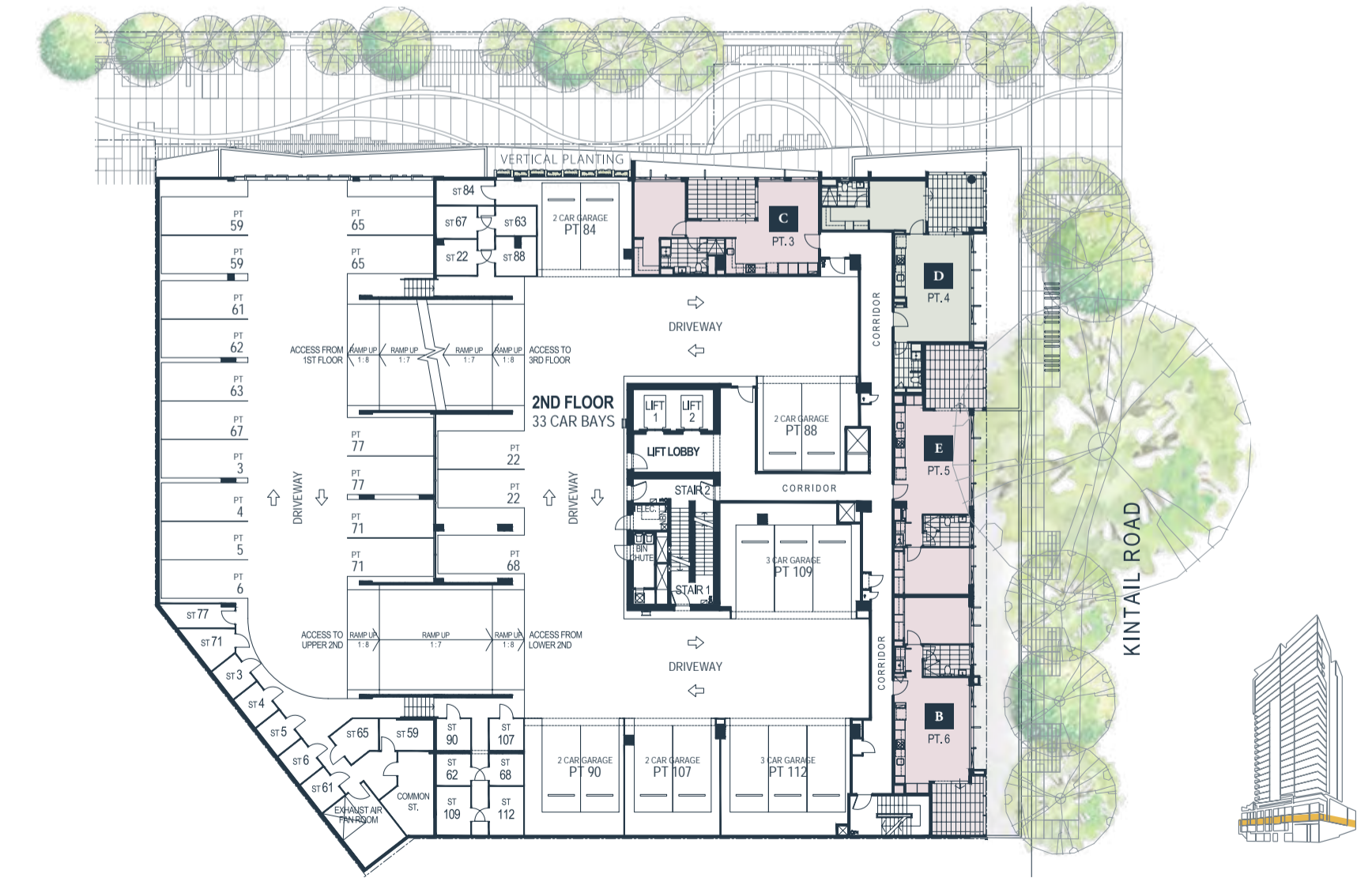
1ST FLOOR



GROUND FLOOR



2ND FLOOR



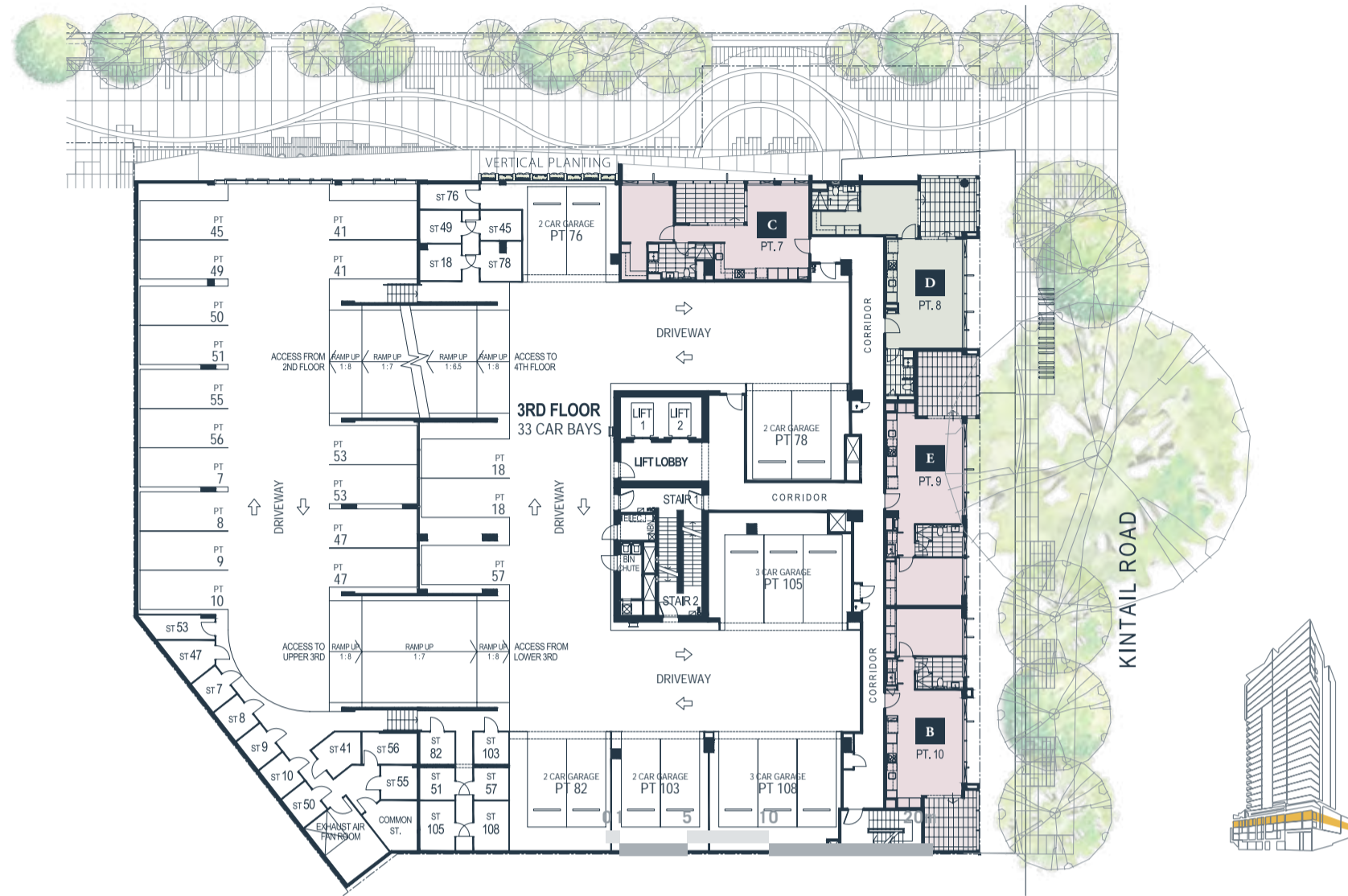
GENERAL NOTES: 1. The apartment areas shown here are approximate and are measured to: The outside face of external walls. The outside face of walls between apartment & lobby. The middle of party walls. 2. These area measurements are architectural measurements as defined in the contract conditions and are different from 'survey dimensions' also defined in the contract conditions. 3. Shape and configuration of balconies, doors, windows, ducts and columns may differ from those illustrated. 4. Refer to detailed apartment layouts included in the sales contract document for variations to layout & balconies. 5. The commercial tenancies areas shown here are approximate and are measured to the inside face of walls & inside face of glazing. 6. □ Indicates artificial lawn.



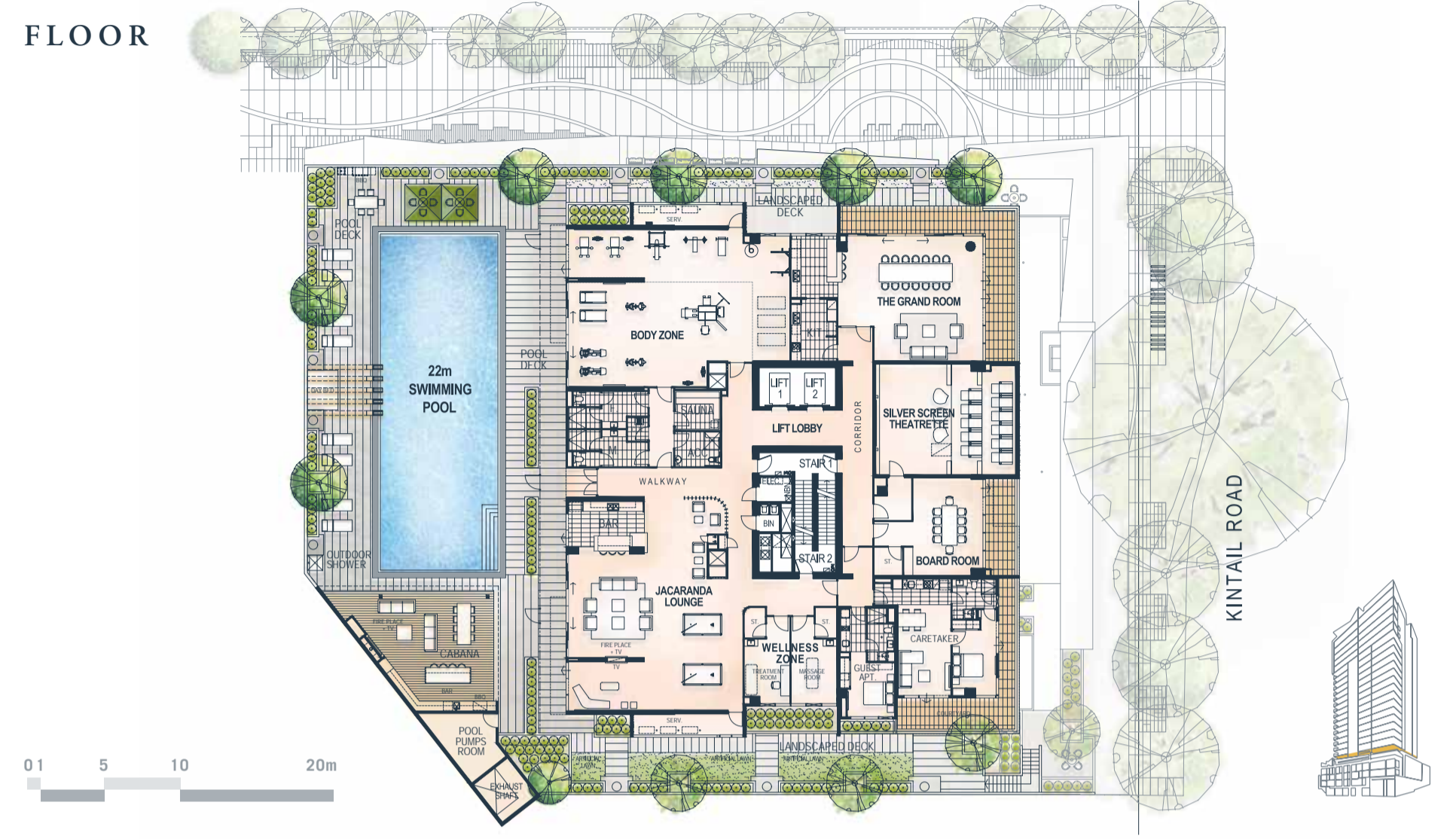
GENERAL NOTES: 1. The apartment areas shown here are approximate and are measured to: The outside face of external walls. The outside face of walls between apartment & lobby. The middle of party walls. 2. These area measurements are architectural measurements as defined in the contract conditions and are different from 'survey dimensions' also defined in the contract conditions. 3. Shape and configuration of balconies, doors, windows, ducts and columns may differ from those illustrated. 4. Refer to detailed apartment layouts included in the sales contract document for variations to layout & balconies. 5. The commercial tenancies areas shown here are approximate and are measured to the inside face of walls & inside face of glazing. 6. □ Indicates artificial lawn.



3RD FLOOR



5TH FLOOR



4TH FLOOR



6TH - 20TH FLOOR

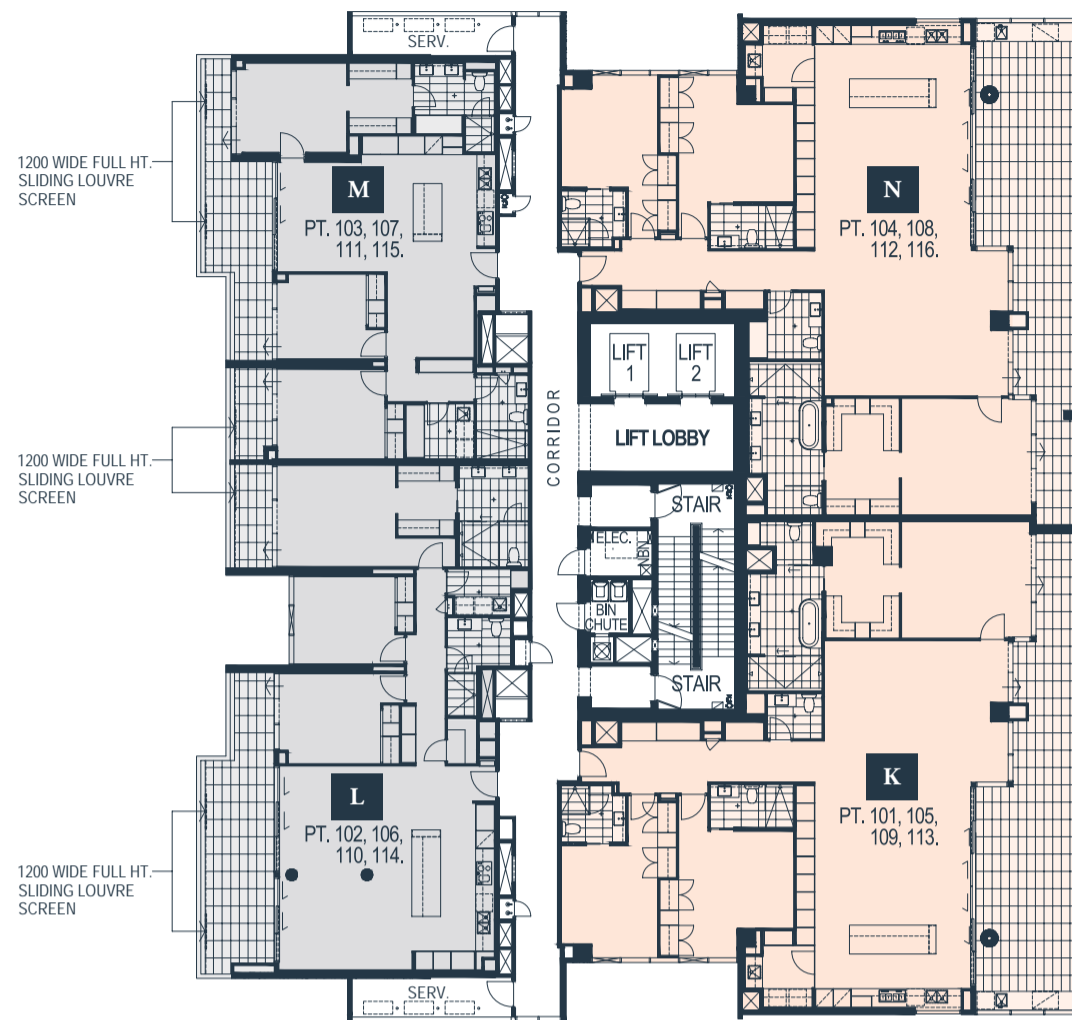


GENERAL NOTES: 1. The apartment areas shown here are approximate and are measured to: The outside face of external walls. The outside face of walls between apartment & lobby. The middle of party walls. 2. These area measurements are architectural measurements as defined in the contract conditions and are different from 'survey dimensions' also defined in the contract conditions. 3. Shape and configuration of balconies, doors, windows, ducts and columns may differ from those illustrated. 4. Refer to detailed apartment layouts included in the sales contract document for variations to layout & balconies. 5. The commercial tenancies areas shown here are approximate and are measured to the inside face of walls & inside face of glazing. 6. □ Indicates artificial lawn.

GENERAL NOTES: 1. The apartment areas shown here are approximate and are measured to: The outside face of external walls. The outside face of walls between apartment & lobby. The middle of party walls. 2. These area measurements are architectural measurements as defined in the contract conditions and are different from 'survey dimensions' also defined in the contract conditions. 3. Shape and configuration of balconies, doors, windows, ducts and columns may differ from those illustrated. 4. Refer to detailed apartment layouts included in the sales contract document for variations to layout & balconies. 5. The commercial tenancies areas shown here are approximate and are measured to the inside face of walls & inside face of glazing. 6. □ Indicates artificial lawn.

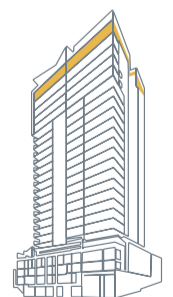
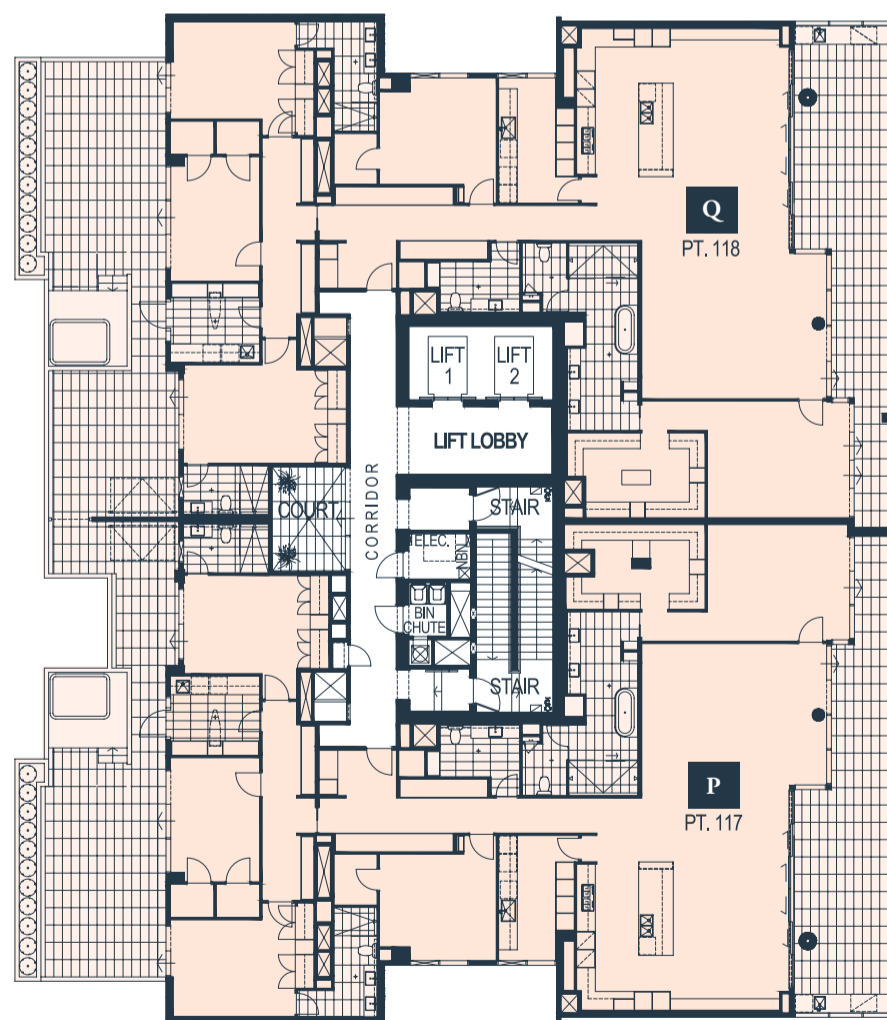
21ST - 24TH

FLOOR



25TH

FLOOR



GENERAL NOTES: 1. The apartment areas shown here are approximate and are measured to: The outside face of external walls. The outside face of walls between apartment & lobby. The middle of party walls. 2. These area measurements are architectural measurements as defined in the contract conditions and are different from 'survey dimensions' also defined in the contract conditions. 3. Shape and configuration of balconies, doors, windows, ducts and columns may differ from those illustrated. 4. Refer to detailed apartment layouts included in the sales contract document for variations to layout & balconies. 5. The commercial tenancies areas shown here are approximate and are measured to the inside face of walls & inside face of glazing. 6. Indicates artificial lawn.

